

# THE WILDCAT

THE OFFICIAL MATCH DAY MAGAZINE OF DURHAM WOMEN FC • f2



Durham Women v Sheffield United  
Sunday 28 March 2021, 12pm  
FA Women's Championship



**VERTU DURHAM**  
Durham

VERTU DURHAM BMW  
DURHAM



# **DURHAM WOMEN FC AND VERTU DURHAM WORKING IN PARTNERSHIP**



## **NOW OFFERING VIRTUAL APPOINTMENTS!**

Virtual Appointments are now available with Vertu Durham!

Scan the QR code to find out more, or:

Call: 0191 3570921

Email: [rhsodonohoe@vertumotors.com](mailto:rhsodonohoe@vertumotors.com)

VERTU DURHAM BMW / MINI  
BROOMSIDE PARK  
DURHAM  
DH1 1HP



Follow Vertu Durham  
on Instagram

@durhammini



# FROM THE DUGOUT

Good afternoon and welcome to today's game against Sheffield United.

I'd like to extend a warm welcome to Neil Redfearn, Zoe Johnson and all the players, staff and officials from Sheffield today.

Our last game against Leicester City was a disappointing result for the players and everybody and not what anybody wanted. Ultimately, it's my responsibility and I take responsibility for that. That said, we've had an unbelievable 18 months - to be fair, we've had quite a good four or five years. We just need to put it behind us and try and get the most we can from our remaining four games. We have to look forward, not back.

There are bigger things coming for

the club and it grows year-on-year. We're not really in a position where someone is going to throw millions of pounds at us so that we can dramatically change things, but we've improved. The players we've signed have added something different and I'm very proud of what we are, where we are and what we're competing for.

This week we've welcomed Ali Johnson to the squad. She's a player we've tried to sign before so we're very happy we've been able to make it happen. She's a very technical player, quick and has a great left foot. Hopefully she'll add something different to the squad.

Today we face Sheffield United - and due to the pandemic I think this is going to be the sixth time we've

played them this season when you factor in friendlies! I've got a lot of respect for Neil, he did really well at Doncaster and is doing that again at Sheffield. They've got some very good, hard-working, solid players and a lot of craft in there as well. We know it'll be a tough game, like it always is, and these are the type of games that everyone wants to play in.

I hope you enjoy watching the stream of the game today and thanks as ever for your brilliant support,

Lee Sanders



# SARAH WILSON

Good afternoon and welcome to today's game against Sheffield United.

Our last game saw me hit 150 appearances for the club and I was absolutely delighted to hit that milestone this year - especially after picking up an injury last year and missing out a little bit. Obviously it was a disappointing day for us, but after reflecting on it you do sit and realise how incredible a milestone it is. I absolutely love it here and it's the best decision I ever made to come along to Durham - and I've never looked back.

I can remember when I first came, I watched a few of the games beforehand and I knew this was something I wanted to help push forward and be a part of. To look back over the last six years, it's incredible to see the growth and development of the club, the fanbase, the youth team and RTC. It's fantastic to be part of.

Today we welcome Sheffield United and anything can still happen. Sheffield is a big game for us and we know it's going to be an incredibly tough test. They are one of the best teams in the league, have some incredible players and also have

the top goal scorer playing for them - so we know it's going to be tough. But we just have to keep pushing and focusing on ourselves. What we've achieved this year is incredible and we just want to keep pushing and be the best that we can be and have the best possible season that we can.

Thanks as always for your support,

Sarah Wilson





**Heads Up**  
The FA For **ALL**

**Change the conversation  
on mental health**

**#headsup**

**[thefa.com/headsup](https://thefa.com/headsup)**

# LEAGUE STATS

| Rank | Club  | P  | W  | D | L  | GF | GA | GD  | Pts |
|------|---|----|----|---|----|----|----|-----|-----|
| 01   |  Leicester City          | 16 | 13 | 2 | 1  | 46 | 15 | +31 | 41  |
| 02   |  Durham                  | 17 | 11 | 5 | 1  | 25 | 11 | +14 | 38  |
| 03   |  Liverpool               | 16 | 9  | 4 | 3  | 31 | 12 | +19 | 31  |
| 04   |  Sheffield United        | 16 | 9  | 4 | 3  | 31 | 12 | +19 | 31  |
| 05   |  London City Lionesses   | 17 | 6  | 4 | 7  | 17 | 15 | +2  | 22  |
| 06   |  Lewes                   | 16 | 6  | 4 | 6  | 15 | 17 | -2  | 22  |
| 07   |  Blackburn Rovers Ladies | 16 | 4  | 5 | 7  | 16 | 24 | -8  | 17  |
| 08   |  Crystal Palace          | 16 | 4  | 4 | 8  | 22 | 26 | -4  | 16  |
| 09   |  Charlton Athletic       | 15 | 2  | 5 | 8  | 13 | 22 | -9  | 11  |
| 10   |  Coventry United         | 16 | 3  | 1 | 12 | 14 | 40 | -26 | 10  |
| 11   |  London Bees             | 17 | 2  | 2 | 13 | 9  | 45 | -36 | 8   |

SUN 28 MAR

KICK OFF 12:00  
MAIDEN CASTLE SPORTS PARK

DURHAM



VS



SHEFFIELD UNITED

SUN 28 MAR

KICK OFF 13:00  
QUORN FC

LEICESTER CITY



VS



COVENTRY UNITED

SUN 28 MAR

KICK OFF 14:30  
THE DRIPPING PAN

LEWES



VS



LONDON BEES

SUN 28 MAR

KICK OFF 16:30  
DARTFORD FC

LONDON CITY LIONESSES



VS



CHARLTON ATHLETIC

SUN 28 MAR

KICK OFF 16:30  
PRENTON PARK, TRANMERE ROVERS FC

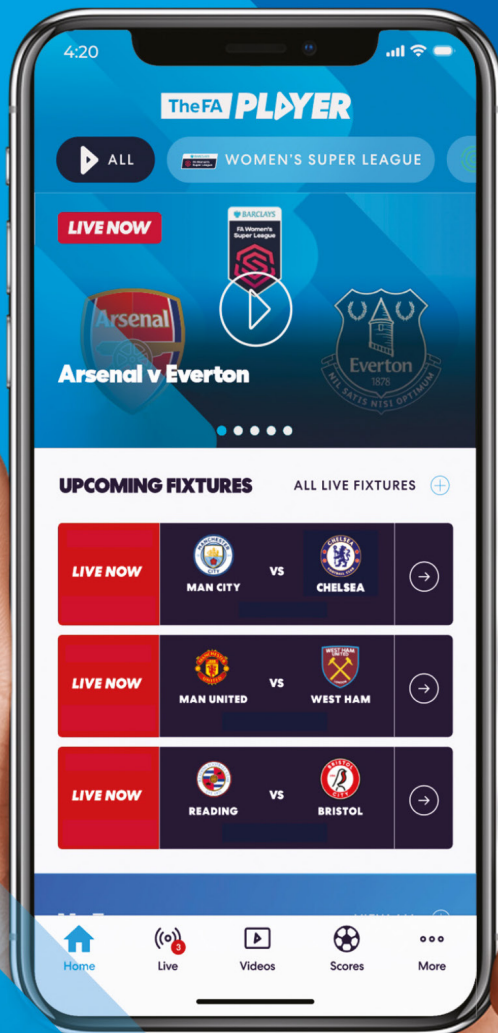
LIVERPOOL



VS



BLACKBURN ROVERS  
LADIES



**EVERY GOAL  
EVERY CELEBRATION  
EVERY MOMENT  
EVERY TEAM**

**FREE**

FOLLOW THE ACTION LIVE ON

**TheFA PLAYER**

[faplayer.thefa.com](https://faplayer.thefa.com)





# INTRODUCING SHEFF UTD

Women's football first came to Sheffield United when club legend Tony Currie founded a female team called Sheffield Hallam United in 1993 as part of the 'United in the Community' project.

It afforded the opportunity for local girls to get involved and the club first entered a team into the South Yorkshire League in 1998.

More age groups were added to the team as time went on and in 2002 the team was able to enter an open-age league when fellow local side Sheffield Inter folded.

United recruited players such as Rachel Ruddach from Sheffield Wednesday who remained at the club until 2017 and is the club's record appearance maker across the 15 years she played for the club at first team level.

In 2005, United beat Wednesday to reach the County Cup final where they lost to giants Doncaster Rovers Belles, and the next season the club won every single

league and cup game to earn promotion to the Midland Combination league.

Over the coming years, United won several more trophies at both first team and junior level and enjoyed stability on and off the pitch as the women's game continued to grow.

The first team gained promotion once again in 2012 as the new Women's Super League kicked off and ensured a pyramid restructure, and in 2014 United were placed in the FA Premier Northern League One but found themselves relegated for only the second time.

Dan O'Hearne was installed as manager and a name change to Sheffield United Ladies happened in 2016, before Carla Ward joined the club from Sheffield FC as assistant manager to O'Hearne at the end of 2017.

Under then General Manager Lee Walshaw, United made a commitment to bid for a licence to the new FA Women's

Championship in time for the 2018-19 season and were awarded a place in the league shortly after Ward had taken over duties as first team manager.

A new squad was built but club legends such as Tania Marsden, who made her 300th appearance at the end of the 2018/19 season, were kept on and there was another name change to Sheffield United Women as the club moved into its most exciting new era yet.

The Blades ended their first season in the second-tier of women's football in fifth place after a run of seven wins in a row saw them end the campaign in fine form. Under new head coach Neil Redfearn, the Blades currently sit third in the table and are enjoying another successful season in the second tier.





# HOME GROUND TECHNIQUE STADIUM



## MANAGER NEIL REDFEARN



## CLUB CAPTAIN LEANDRA LITTLE



## TOP SCORER KATIE WILKINSON (15)



# WE'VE MET BEFORE SHEFF UTD

Nicki Gears' second half header saw Durham Women take the three points at Sheffield United

The forward's glancing header was the only goal in a game which had few real chances – and was a typical top of the table affair.

Both sides made changes from their last outing, with the Wildcats welcoming Molly Sharpe back into the fold.

And in a fairly even and well-contested start, the first two real chances fell to Durham.

First Mollie Lambert saw a sweetly-struck volley blocked by the head of Leandra Little, before Naomi Hartley slid in to block Sharpe's goal-bound strike.

But Sheffield United would come closest to opening the scoring during a cagey opening half an hour – with Rhema Lord-Mears seeing a shot cannon back off the inside of the post before Mel Johnson's

follow-up was over.

Johnson would come close again moments later too, seeing a shot bravely blocked by the sliding Sarah Wilson before her second attempt flew narrowly wide.

Clear-cut chances were few and far between in the remainder of the half, with the Blades dominating possession and putting the Wildcats' backline under some real pressure.

Durham rode the storm for the remainder of the half, but had to deal with more home pressure after the restart.

Beth Hepple was in the right place to hack a Lord-Mears shot away from danger as the Blades kept committing players forward.

Yet somewhat against the run of play, it was Durham who took the lead – Gears rising highest to nod home after Hepple's free-kick was only palmed away into her path.

Gears would come close to a second shortly after too, seeing her effort hit the side netting after Hepple's clever set.

Sharpe then flashed a shot wide of the far post but chances were at a premium in the dying minutes.

While Sheffield United looked to get forward, it was testament to Durham's fine defending that Megan Borthwick remain relatively untroubled.

And thanks to some excellent game management, the Wildcats saw out the game and claimed three points on the road.





## ONE TO WATCH KATIE WILKINSON

Striker Wilkinson is in fine form having scored in her last five FA Women's Championship games and nine of her last ten stretching back to the end of 2020. After winning the golden boot in last season's curtailed campaign, Wilkinson has scored 16 goals in 16 games so far this season and is in a good position to defend her individual award.

With solid hold up play and an eye for a good pass, Wilkinson's all-round game causes problems for teams as she looks to continue her good run of form with just four games left of the 2020/21 season.



## ONE TO WATCH BEX RAYNER

Attacking midfielder Rayner returned to Sheffield United in January this year after an 18-month spell with Nottingham Forest. Originally joining United as a teenager in 2018, Rayner enjoyed a successful first season at the club at a time where she was also an England under 21 international.

Since returning to the club after being re-signed by her former Doncaster Rovers Belles manager Neil Redfearn, Rayner assisted four goals in her first three games and has been a constant presence in United's starting eleven since her January move.

## SQUAD CHECK

### Fran Kitching

Goalkeeper  
Former Chelsea and Liverpool stopper who has been a regular this season.

### Becky Flaherty

Goalkeeper  
Northern Irish international who pushes Kitching all the way for starts.

### Leandra Little

Defender  
Has won this league with Doncaster and played in the top flight for Liverpool.

### Naomi Hartley

Defender  
Former Manchester United youngster who joined the Blades in the 2018/19 campaign.

### Nat Johnson

Defender  
Full-back formerly of Leicester City, joined the Blades last year.

### Ocean Rolandson

Defender  
A recent arrival from National League side Watford.

### Chloe Dixon

Defender  
Her versatility has proven useful this term and has played a variety of roles.

### Kasia Lipka

Midfielder  
Cultured midfielder who spent several years at Doncaster Belles.

### Maddy Cusack

Midfielder  
Recently made her 50th appearance for the club having become a regular.

### Rhema Lord-Mears

Midfielder  
Attack-minded midfielder with an eye for goal.

### Jade Pennock

Forward  
Always a goal threat and a tricky player to deal with out wide.

### Courtney Sweetman-Kirk

Forward  
Prolific striker formerly of Liverpool, Everton and Notts County.

### Mel Johnson

Forward  
Scored plenty for Aston Villa last season and has impressed this term too.

# JOIN THE LIONESSES SUPPORTERS CLUB



Get access to exclusive competitions,  
priority tickets and the latest England news.

[THEFA.COM/JOINLSC](https://thefa.com/joinlsc)



**LIONESSES**  
SUPPORTERS CLUB





# PLAYER SPONSORS





# JOHN MIDDLETON

Greetings from The Turret!

It's difficult to know how to start my column this week. Our team did us proud in the last game and didn't get the result which they deserved; leaving us a potential six points to clamber back, plus goal difference, in order to get promotion. Also, we're not used to seeing our team lose!

Just like our team after the two Leicester goals, who never gave up and battled to the end, neither should we. This is Football, anything could happen! We cannot give up until the end. I know this season is,

by points tally alone, a success but, promotion or not, we know next season will be even better - fans will be back, the team will continue to build...

It isn't over yet. Today we welcome another in-form team that we know very well. Sheffield United have been there or thereabouts all season and they've always been dangerous opponents. Whether promotion is out of sight or not, both teams today will do their very best to come out on top.

We look forward to you joining us on Durham Hospitals Radio and/or the Live Stream. Please

keep on sending in your feedback.

Enjoy the game, let's hear the "Wildcat Roar"

John

@JADMiddy

[www.internet-radio.com/station/durhamhospital/](http://www.internet-radio.com/station/durhamhospital/)



## EDUCATION PARTNER

# DURHAM SIXTH FORM CENTRE

Combine your studies with a 'football-rich' programme of activities – through Durham Sixth Form's partnership with Durham Women FC. Players undertaking a Football Academy programme of study are talented individuals who want to combine either a BTEC sports course or an A-level programme of study whilst receiving specialist coaching from fully qualified UEFA-licenced coaches.

In addition to undertaking a programme of study, students will:

- Receive four hours of coaching per week at our state-of-the-art facilities at Maiden Castle, plus have the opportunity to attend additional strength and conditioning sessions
- Represent Duram Sixth Form Centre and Durham Women FC on a Wednesday afternoon in the National Football Youth League and A.O.C. National League and cup competitions
- The opportunity to take their Higher Sports Leader Award, which is equivalent to an additional A-Level

The most able footballers will have the chance to progress into the Durham Womens football squad. Places are strictly limited due to the practical nature of the programme (30 players per year).

Trials are held between February and April. Pre-season training begins end of July/beginning of August.

On completion of the programme of study, students can progress into sport-related careers or higher education.





## **EDUCATION PARTNER**

# **BEDE SIXTH FORM**

Bede Sixth Form have formed an exciting partnership with Durham Women FC to bring a Womens' Football Academy to the area, and enable up and coming players the chance to shine both in their education and on the pitch.

Started in September 2019, this exciting initiative gives aspiring footballers aged 16 to 19 the chance to combine football with studying any of our A level or vocational qualifications.

Players in the Academy will get the chance to compete against some of the best young players in the country as they represent Durham Women FC in both the National Football Youth League and North East Colleges' League.

Academy players may even get to represent Durham Women FC as part of one of their squads which will compete in the FA Women's National League or FA Women's Championship.

Academy players will receive three hours technical coaching per week from a UEFA B qualified coach.

Sound interesting? Come along to one of our sports taster sessions to try out what being part of the Academy will be like and find out more about this exciting opportunity.





# EDUCATION PARTNER

# NEWCASTLE

# COLLEGE

This year, we have confirmed a new educational partnership with Newcastle College – which will allow young females on Tyneside and beyond to combine their studies with an exciting football programme.

This partnership will allow those keen on pursuing a career in the sport to do so without having to leave their studies behind.

And the new partnership with Newcastle College will allow even more learners to benefit from the exciting opportunities this programme can bring.

Students who join the Women's Football Academy at Newcastle College will be able to study for one of the many vocational qualifications on offer at the centre – which include sport coaching, personal training, law, policing and protective services, and a host of other options.

And alongside their studies, they will train at least twice a week while also taking part in a competitive fixture programme – with some sessions to be led by Durham Women first-team player, Sarah Robson.

Newcastle College also offers a strong enrichment programme, which has previously included overseas football tours to the likes of Italy and Malta.



THE W





# WILDCATS

Autograph



**Thermopatch**  
Sports

**THERMOPATCH SPORTS SUPPLIER OF HIGH QUALITY**

**SPONSORS CLUB CREST NUMBERS**

**DIRECT TO BRANDS SPORTS CLUBS,  
UNIVERSITIES AND COMPANIES**

- **UK PRODUCTION**
- **LATEST TECHNOLOGIES**
- **QUICK TURN AROUND**
- **BASED LOCALLY IN NORTH YORKSHIRE**

**+44 (0) 1845 577926 sales@thermopatchsports.com**

**WWW.THERMOPATCHSPORTS.COM**

**PROUD SPONSOR OF  
DURHAM WFC TRAINING RANGE**

**PROUD SUPPLIER OF THE  
WOMEN'S OFFICIAL SLEEVE BADGE**





# PLAYER SPONSORS



Qualified Tree Surgeon operating in the North East of England. Certification available on request. No job too big or small.

**SEASON TICKET HOLDERS  
20% OFF**

**ATREE SERVICES**  
North East of England.  
Tel: 07983 329299  
Expiration Date: 31/12/21

**FREE NO OBLIGATION QUOTES**

Full Tree Removal    Tree Reduction / Crown Lifting    Pruning  
Garden / Site Clearance    Stump Grinding  
General Garden Maintenance

**07983 329299 / [aiden973@gmail.com](mailto:aiden973@gmail.com)**



# THESE WILDCATS JUST LOVE TO PLAY

**SSE Wildcats provide girls aged  
5-11 the opportunity to have fun,  
make friends and play football.**

With over 1,000 centres nationwide,  
find a centre near you and join the fun!



• THE FA GIRLS' FOOTBALL CENTRES •

Find your nearest centre at  
**[TheFA.com/SSEWildcats](https://www.thefa.com/SSEWildcats)**



# FEATURE INTERVIEW

---

As she moves closer to a first-team return, Iris Achterhof reflects on her recovery from injury so far...



**Seven months have passed since Iris Achterhof suffered the first serious of her career - but the Durham Women striker is now firmly on the comeback trail.**

Achterhof suffered an ACL injury moments after entering the field against Liverpool on the opening day of the season, and was then ruled-out of the remainder of the campaign.

But having returned to some elements of field-based training in recent weeks, Achterhof is moving ever-closer to a return to full training.

And when *The Wildcat* caught-up with the striker this week, she was in a positive mood as her comeback continues.

"I'm doing well," she said.

"I'm back into training with passing and shooting, so that's nice. I've still got a long way to go though.

"I'm used to running a lot, but having the ball at your feet is something else.

"It makes everything better. During the day you look forward to training again just because you can touch the ball, pass with your teammates and stuff. It's so much better."

While long-term injuries can naturally take their toll physically, so too can they prove a drain mentally.

But Achterhof has praised the impact of her teammates and club staff in ensuring her morale has remained high during a testing time.

"It's such a big deal that the team and everyone at the club is around you and helping you every step of the way," she admitted.

"There hasn't been a point when I've been really down about the injury, because everyone around me keeps talking to me and training with me.

"It's been great, to be fair."

But that's not to say there haven't been some moments of frustration.

The striker has been a regular attendee at home games this season and - while she has been vocally backing her colleagues from the sidelines - can't help but wish she was able to cross the white line.

"It's when you watch the games and want to be part of it to try and help the team," Achterhof expalined.

"It's been seven months since I've done it, but it honestly feels like a month

ago because the time has flown by.

"There's five more months to go now, and hopefully that's the same and I'll be back on the field in no time."

So what next for the striker?

A return to the first-team fold is likely still a while away, with Achterhof set to be gradually re-introduced to training under the careful watch of the club's medical team in the coming weeks and months.

And for that reason, the striker is keen not to look too far ahead as she eyes a return to action.

"Honestly, I'm not looking forward too much.

"I'm just trying to take it day-by-day and help the team out as much as possible."



# Looking for a teaching or school support job?

**Recruiting Teachers, NQTs, TAs,  
HLTAs, Cover Supervisors &  
other support staff for primary,  
secondary & SEND schools**

- Day-to-day supply cover
- Short & long-term placements
- Permanent positions

## Why work for Vision for Education?

- Excellent daily rates paid weekly through PAYE
- Guaranteed pay scheme (subject to availability & qualifying criteria)
- FREE training & regular social events
- Generous refer a friend or colleague bonus scheme

## 13 branches across the UK

|              |              |
|--------------|--------------|
| Bristol      | Northampton  |
| Cambridge    | Peterborough |
| Huddersfield | Preston      |
| Leeds        | Sheffield    |
| Lincolnshire | Teesside     |
| Liverpool    |              |
| Manchester   |              |
| Newcastle    |              |

## Get in touch today

**t** 0800 085 0644

**e** [info@visionforeducation.co.uk](mailto:info@visionforeducation.co.uk)

**w** [www.visionforeducation.co.uk](http://www.visionforeducation.co.uk)



# ME AND VISION FOR EDUCATION

IN PARTNERSHIP WITH



VISION for  
EDUCATION

Through our long-running partnership with Vision for Education, a number of our first-team players have gained valuable work experience in educational settings. Here, former Wildcat Annabel Johnson tells us about her experience working with Vision for Education...

//

I worked in a number of different schools and found Vision for Education very helpful. It was very flexible working and it meant I had a really good work-life balance while I was working with them. Working with Vision for Education helped me when I moved into working in an office, because I understood more about how different people work, how to work in larger groups and it just gave me a great experience of having to deal with the unexpected. I'd definitely recommend Vision for Education. They're a really understanding company who recognise your needs and they're very supportive.

//



You can search and apply for permanent and supply teaching jobs online at [visionforeducation.co.uk](http://visionforeducation.co.uk)

Or if you know someone looking for work, why not recommend them and benefit from Vision for Education's generous recommend a friend scheme (terms and conditions apply).







# LAST TIME OUT

Durham Women suffered a first defeat of the season at the hands of Leicester City. The first half was a tight, competitive affair, with very little between the two sides.

Neither side had many glimpses of goal in the early stages. Robson's effort from distance for the Wildcats lacked power, and was saved comfortably, whereas Leicester's only sight of goal came from a flicked header following a corner on 8 minutes.

The first clear cut chance came for the visitors after 27 minutes; Borthwick tipping Cain's strike wide following a Leicester break down the left.

The Wildcats' best chance of the first half came when Robson went through two strong challenges, causing the ball to break to Briggs, whose shot stung the palms of Levell in the Leicester goal. The referee then brought play back to book Robson, who was adjudged to have fouled Howard in the build-up.

As the first period to a close, the Foxes

again had a sighter of the Durham goal. Devlin whipped in a freekick from the wide right, and it was glanced wide.

The second half began as competitive as the first, with Lambert being booked within seconds of the restart for a foul.

From the resulting freekick, failure to clear resulted in Tierney striking the ball home for Leicester City.

Durham looked for an instant response, with Hepple's freekick from the right being headed narrowly wide by Wilson.

Just before the hour mark, Devlin very nearly doubled Leicester's lead, but Borthwick produced an outstanding save to keep the Wildcats within a goal of the Foxes.

However, Leicester produced the second goal with just half an hour remaining, Tierney meeting a free-kick to double her tally for the afternoon.

The Wildcats responded by pressing their opponents high, and this pressure nearly paid off, when Galloway set up Hepple for a strike from distance. Unfortunately, the attacker's strike failed to trouble Levell.

The chances, like in the first half, died down for much of the second half, and when the visitors came close to extending their lead to three after 83 minutes, Robson cleared it off the line.

Following this chance, Durham had an opening of their own when Sharpe penetrated down the left, but Hepple's strike was saved well by Levell.

Durham showed no signs of giving up, and with just minutes remaining, Hepple again had a sight of goal, latching on to Galloway's pullback before dragging her effort agonisingly wide.

But the Leicester defence stood firm late on.



**Megan Borthwick**

Sponsored by:

County Durham Blinds



**Hannah Reid**

Sponsored by:

RTC Under 11s



**Kathryn Hill**

Sponsored by:

Tony Waters



**Lauren Briggs**

Available to sponsor



**Mollie Lambert**

Sponsored by:

Craig Morley  
Supporting Independence  
Outreach Services Ltd



**Sarah Wilson**

Sponsored by:

'The Wild Ones'



**Beth Hepple**

Sponsored by:

Darrin's Super Ices  
AR Tree Services



**Molly Sharpe**

Sponsored by:

Stuart Dryden



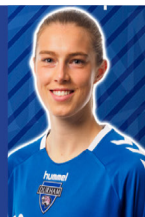
**Nicki Gears**

Available to sponsor



**Iris Achterhof**

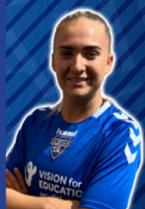
Available to sponsor



# 2020/21 SQUAD

**Bridget Galloway**

Available to sponsor



**Ellie Christon**

Sponsored by:

Lee Dolby



**Becky Salicki**

Available to sponsor



**Abby Holmes**

Sponsored by:

Lee Morpeth



**Emily Roberts**

Available to sponsor



**Sarah Robson**

Sponsored by:

Harry Tidbury

Neil Thornton





## 2020/21 Player Sponsorships

**Fan Package**

£100

- One adult season ticket, giving you access to every home game in all competitions once Durham Women are able to welcome back supporters.
- Your name or logo on your chosen players' website profile and alongside their name in the match day programme

**Bronze Package**

£300

- Two adult season tickets, giving you access to every home game in all competitions once Durham Women are able to welcome back supporters.
- Your name or logo on your chosen players' website profile and alongside their name in the match day programme
- An advert in the new Durham Women FC Business Directory
- A quarter page programme advert, featured in every first team match day programme - both in paper and digital format.

**Silver Package**

£400

- Three adult season tickets, giving you access to every home game in all competitions once Durham Women are able to welcome back supporters.
- Your name or logo on your chosen players' website profile and alongside their name in the match day programme
- An advert in the new Durham Women FC Business Directory
- A half page programme advert, featured in every first team match day programme - both in paper and digital format.
- Your chosen players' signed away kit at the end of the season.

**Gold Package**

£600

- Five adult season tickets, giving you access to every home game in all competitions once Durham Women are able to welcome back supporters.
- Your name or logo on your chosen players' website profile and alongside their name in the match day programme
- An advert in the new Durham Women FC Business Directory
- A full page programme advert, featured in every first team match day programme - both in paper and digital format.
- Your chosen players' signed home kit at the end of the season.





COOPER DURHAM  
PART OF THE INDEPENDENT GROUP



COOPER DURHAM  
PART OF THE INDEPENDENT GROUP



Durham University



[maddy.wood@durhamwfc.co.uk](mailto:maddy.wood@durhamwfc.co.uk)



[www.durhamwfc.co.uk](http://www.durhamwfc.co.uk)



| DATE           | OPPOSITION         | COMP. | RESULT | 1         | 2        | 3           | 4        | 5        | 6        |
|----------------|--------------------|-------|--------|-----------|----------|-------------|----------|----------|----------|
| September 2020 |                    |       |        |           |          |             |          |          |          |
| 6              | Liverpool (A)      | FAWC  | D 1-1  | Borthwick | Hill     | Salicki     | Christon | Holmes   | Lambert  |
| 12             | Lewes (H)          | FAWC  | W 3-0  | Borthwick | Hill     | Salicki     | Wilson   | Christon | Holmes   |
| 27             | London City (H)    | FAWC  | W 1-0  | Borthwick | Hill     | Salicki     | Wilson   | Christon | Lambert  |
| October 2020   |                    |       |        |           |          |             |          |          |          |
| 4              | Leicester (A)      | FAWC  | D 2-2  | Borthwick | Hill     | Salicki     | Wilson   | Christon | Lambert  |
| 7              | Coventry (H)       | CC    | W 5-2  | Borthwick | Ayre     | Salicki     | Wilson   | Christon | Lee      |
| 11             | Crystal Palace (H) | FAWC  | W 2-0  | Borthwick | Hill     | Salicki     | Wilson   | Christon | Briggs   |
| 18             | London Bees (A)    | FAWC  | W 2-1  | Borthwick | Hill     | Salicki (1) | Wilson   | Christon | Lambert  |
| November 2020  |                    |       |        |           |          |             |          |          |          |
| 4              | Sheffield Utd (A)  | CC    | W 6-0  | Reid      | Hill (1) | Briggs      | Wilson   | Christon | Lee      |
| 8              | Charlton (H)       | FAWC  | D 1-1  | Borthwick | Hill     | Briggs      | Wilson   | Christon | Lambert  |
| 15             | Sheffield Utd (A)  | FAWC  | W 1-0  | Borthwick | Hill     | Briggs      | Wilson   | Christon | Lambert  |
| 19             | Aston Villa (H)    | CC    | D 1-1  | Borthwick | Hill     | Briggs      | Wilson   | Christon | Lambert  |
| December 2020  |                    |       |        |           |          |             |          |          |          |
| 6              | Blackburn (H)      | FAWC  | D 0-0  | Borthwick | Hill     | Briggs      | Wilson   | Christon | Lambert  |
| 13             | Coventry (A)       | FAWC  | W 4-3  | Borthwick | Hill     | Briggs      | Wilson   | Christon | Lambert  |
| 20             | Liverpool (H)      | FAWC  | W 2-0  | Borthwick | Hill     | Briggs      | Wilson   | Christon | Lambert  |
| January 2020   |                    |       |        |           |          |             |          |          |          |
| 10             | Lewes (A)          | FAWC  | D 1-1  | Borthwick | Hill     | Briggs      | Wilson   | Christon | Lambert  |
| 17             | Crystal Palace (A) | FAWC  | W 1-0  | Borthwick | Hill     | Briggs      | Wilson   | Salicki  | Lambert  |
| 21             | West Ham (A)       | CC QF | L 3-0  | Reid      | Hill     | Holmes      | Wilson   | Salicki  | Christon |
| 24             | London Bees (H)    | FAWC  | W 1-0  | Borthwick | Hill     | Christon    | Wilson   | Salicki  | Lambert  |
| February 2020  |                    |       |        |           |          |             |          |          |          |
| 28             | London City (A)    | FAWC  | W 1-0  | Borthwick | Hill     | Christon    | Wilson   | Salicki  | Briggs   |
| March 2020     |                    |       |        |           |          |             |          |          |          |
| 7              | Blackburn (A)      | FAWC  | W 2-0  | Borthwick | Hill     | Holmes      | Wilson   | Salicki  | Briggs   |
| 14             | Leicester (H)      | FAWC  | L 2-0  | Borthwick | Hill     | Holmes      | Wilson   | Salicki  | Briggs   |
| 28             | Sheffield Utd (H)  | FAWC  |        |           |          |             |          |          |          |
| April 2020     |                    |       |        |           |          |             |          |          |          |
| 25             | Charlton (A)       | FAWC  |        |           |          |             |          |          |          |
| May 2020       |                    |       |        |           |          |             |          |          |          |
| 2              | Coventry (A)       | FAWC  |        |           |          |             |          |          |          |



|    | 7          | 8          | 9           | 10          | 11           | Sub 1       | Sub 2        | Sub 3       | Sub 4       |
|----|------------|------------|-------------|-------------|--------------|-------------|--------------|-------------|-------------|
|    |            |            |             |             |              |             |              |             |             |
| rt | Robson     | Hepple (1) | Roberts     | Galloway    | Gears        | Sharpe      | Achterhof    | Wilson      |             |
| s  | Robson     | Hepple (2) | Briggs      | Roberts (1) | Sharpe       | Galloway    | Gears        | Lambert     |             |
| rt | Robson     | Hepple (1) | Roberts     | Gears       | Sharpe       | Briggs      | Galloway     |             |             |
|    |            |            |             |             |              |             |              |             |             |
| rt | Robson     | Hepple (1) | Roberts (1) | Gears       | Galloway     | Briggs      | Sharpe       |             |             |
|    | Briggs     | Hepple (3) | Roberts     | Sharpe (1)  | Galloway (1) | Hill        | Robson       | Crosthwaite | Atkinson    |
|    | Robson     | Hepple (2) | Roberts     | Sharpe      | Galloway     | Atkinson    | Lee          | Crosthwaite | Gears       |
| rt | Robson     | Hepple     | Roberts     | Gears       | Sharpe (1)   | Briggs      | Crosthwaite  | Galloway    |             |
|    |            |            |             |             |              |             |              |             |             |
|    | Robson (1) | Hepple     | Lambert     | Roberts (1) | Sharpe (1)   | Gears (1)   | Galloway (1) | Ayre        | Crosthwaite |
| rt | Robson     | Hepple     | Roberts     | Gears       | Galloway (1) | Crosthwaite | Sharpe       |             |             |
| rt | Robson     | Hepple     | Roberts     | Gears (1)   | Sharpe       | Galloway    | Lee          |             |             |
| rt | Robson     | Hepple     | Roberts (1) | Sharpe      | Galloway     | Lee         | Brown        | Ayre        | Crosthwaite |
|    |            |            |             |             |              |             |              |             |             |
| rt | Robson     | Hepple     | Roberts     | Sharpe      | Gears        | Galloway    | Crosthwaite  |             |             |
| rt | Robson (1) | Hepple (1) | Roberts (2) | Sharpe      | Galloway     | Gears       | Brown        | Salicki     |             |
| rt | Robson     | Hepple     | Gears       | Sharpe (1)  | Roberts (1)  | Brown       | Galloway     | Lee         | Salicki     |
|    |            |            |             |             |              |             |              |             |             |
| rt | Robson     | Hepple     | Roberts     | Sharpe      | Galloway (1) | Brown       | Gears        | Salicki     | Bradley     |
| rt | Robson     | Hepple     | Roberts     | Brown       | Galloway (1) | Christon    | Gears        | Bradley     |             |
| n  | Robson     | Hepple     | Lambert     | Bradley     | Sharpe       | Roberts     | Greenwood    | Galloway    |             |
| rt | Briggs     | Hepple     | Roberts     | Brown       | Galloway (1) | Holmes      | Sharpe       | Bradley     | Gears       |
|    |            |            |             |             |              |             |              |             |             |
| s  | Robson     | Hepple     | Roberts (1) | Brown       | Sharpe       | Holmes      | Galloway     | Lambert     |             |
|    |            |            |             |             |              |             |              |             |             |
| s  | Robson (1) | Hepple     | Roberts     | Brown       | Galloway (1) | Sharpe      | Lambert      | Bradley     |             |
| s  | Robson     | Hepple     | Christon    | Lambert     | Galloway     | Sharpe      | Brown        | Gears       |             |
|    |            |            |             |             |              |             |              |             |             |
|    |            |            |             |             |              |             |              |             |             |
|    |            |            |             |             |              |             |              |             |             |
|    |            |            |             |             |              |             |              |             |             |
|    |            |            |             |             |              |             |              |             |             |
|    |            |            |             |             |              |             |              |             |             |





HOME ENTERTAINMENT AND SECURITY

SPECIALISTS IN

HOME ENTERTAINMENT AND SECURITY

FREE NO OBLIGATION QUOTATIONS!

AERIALS · SATELLITES · CCTV · ALARMS · DATA ·  
BESPOKE CINEMA ROOMS · SOUND SYSTEMS ·  
TV INSTALLATION · MULTI ROOM ·  
NETWORKING · DOOR ENTRY · INTERNET & WIFI  
SOLUTIONS

DOMESTIC AND COMMERCIAL CONTRACTORS

07814417419

INFO@RMTVSOLUTIONS.CO.UK

WWW.RMTVSOLUTIONS.CO.UK



DWFC Player, Jess Holder, is sponsored by Kixx York and Kixx Middlesbrough, part of a national children's football academy brand, Kixx UK. When Jess isn't playing and training with DWFC, she becomes 'Coach Jess' with Kixx York. The Kixx academies are a fantastic introduction to football for children ages 18 months to 10 years of age. You can find Kixx academies located all across the country (including Middlesbrough and Redcar, which are owned by football league legend, James Coppinger). To find your closest Kixx children's football academy, visit [www.kixx.org.uk](http://www.kixx.org.uk).

# iPRO

HYDRATE

OFFICIAL HYDRATION DRINK & WELLNESS PARTNER  
**OF DURHAM WOMEN FC**



**NATURAL  
INGREDIENTS**



**CAFFEINE  
FREE**



**NO ADDED  
SUGAR**



**FULLY  
RECYCLABLE**



**VEGETARIAN  
& VEGAN**



**SCAN THE CODE**  
To discover where to buy  
[iprohydrate.com/where-to-buy](http://iprohydrate.com/where-to-buy)

Follow iPRO on Social:



@iPROHYDRATE



# THE TEAMS



- 1 Hannah Reid
- 2 Kathryn Hill
- 3 Lauren Briggs
- 4 Mollie Lambert
- 5 Sarah Wilson
- 6 Sarah Robson
- 7 Beth Hepple
- 8 Molly Sharpe
- 9 Nicki Gears
- 10 Iris Achterhof
- 11 Bridget Galloway
- 12 Lily Crosthwaite
- 13 Megan Borthwick
- 14 Becky Salicki
- 15 Dee Bradley
- 16 Ellie Christon
- 17 Emily Roberts
- 19 Danielle Brown
- 21 Hannah Greenwood
- 22 Grace Ayre
- 24 Abby Holmes
- 30 Brooke Mackain
- 96 Rachel Lee



- 1 Becky Flaherty
- 2 Ellie Wilson
- 3 Nat Johnson
- 4 Leandra Little
- 5 Naomi Hartley
- 6 Kasia Lipka
- 7 Jade Pennock
- 8 Maddy Cusack
- 9 Katie Wilkinson
- 10 Alethea Paul
- 11 Chloe Dixon
- 12 Rhema Lord-Mears
- 13 Emily Batty
- 14 Keri Matthews
- 16 Lucy Watson
- 17 Katie Anderson
- 18 Sophie Walton
- 19 Charley Docherty
- 20 Fran Kitching
- 21 Bex Rayner
- 22 Ocean Rolandsen
- 23 Courtney Sweetman-Kirk
- 46 Mel Johnson

## NEXT UP AT HOME

Durham v Coventry United

2 May

TBC